

**STEVENS HOSPITAL
FINANCIAL STATEMENTS
DECEMBER, 2009**

INDEX TO BOARD FINANCIAL STATEMENTS
Un-audited

<u>Schedule Reference</u>	<u>Schedule Name</u>
Board - 1	Operating Indicators
Board - 2	Statement of Revenues and Expenses-Consolidated
Board - 3	Statement of Revenues and Expenses-By Business Segment
Board - 4	Balance Sheet
Board - 5	Financial Ratio Comparisons
Board - 6	Cash Flow Schedule
Board - 7	Investment Schedule
Board - 8	Graphs - Key Operating Indicators

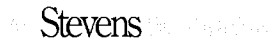
DECEMBER					YEAR TO DATE					
ACTUAL	BUDGET	% VAR.	LAST YEAR	% VAR.		ACTUAL	BUDGET	% VAR.	LAST YEAR	% VAR.
<u>PATIENTS IN HOSPITAL</u>										
ADMISSIONS										
630	587	7%	611	3%	1	7,015	6,966	1%	7,364	-5%
40	52	-23%	37	8%	2	478	610	-22%	455	5%
14	11	33%	14	0%	3	208	149	40%	149	40%
684	650	5%	662	3%	4	7,701	7,724	0%	7,968	-3%
AVERAGE DAILY CENSUS (ADC)										
78.2	75.4	4%	78.2	0%	5	74.9	72.8	3%	77.5	-3%
14.2	16.0	-11%	13.9	2%	6	13.6	16.0	-15%	12.6	8%
2.3	2.8	-19%	2.8	-20%	7	2.6	2.8	-6%	2.8	-6%
4.2	2.1	93%	1.2	245%	8	3.4	1.6	107%	1.3	155%
4.4	4.5	-3%	5.3	-17%	9	4.5	4.7	-4%	4.8	-6%
103.2	100.9	2%	101.5	2%	10	99.0	97.8	1%	99.0	0%
AVERAGE LENGTH OF STAY										
3.8	4.0	-3%	4.0	-3%	11	3.9	3.8	2%	3.9	1%
11.0	9.6	15%	11.6	-6%	12	10.4	9.6	9%	10.1	3%
5.0	8.2	-39%	6.3	-20%	13	5.0	6.8	-27%	6.9	-28%
4.3	4.5	-5%	4.4	-4%	14	4.3	4.3	0%	4.3	1%
<u>OTHER KEY UTILIZATION STATISTICS</u>										
1,357	1,196	13%	1,209	12%		14,993	14,471	4%	14,779	1%
1.374	1.341	2%	1.349	2%	15	1.345	1.308	3%	1.320	2%
1.643	1.602	3%	1.514	9%	16	1.571	1.550	1%	1.526	3%
SURGERY CASES										
186	173	7%	174	7%	17	1,919	2,047	-6%	2,126	-10%
301	258	16%	243	24%	18	3,118	2,835	10%	3,144	-1%
74	80	-7%	87	-15%	19	822	999	-18%	997	-18%
81	64	27%	64	27%	20	1,050	885	19%	952	10%
95	92	3%	97	-2%	21	1,149	1,112	3%	1,156	-1%
3,555	3,415	4%	3,341	6%	22	43,661	41,674	5%	41,853	4%
462	435	6%	458	1%	23	5,365	5,147	4%	5,228	3%
13.0%	12.7%	2%	13.7%	-5%	24	12.3%	12.3%	0%	12.5%	-2%
6.0%	2.3%	168%	2.6%	128%	25	4.0%	2.3%	78%	5.0%	-19%
9,006	8,471	6%	7,699	17%	26	107,620	104,143	3%	100,450	7%
6,684	7,415	-10%	6,661	0%	27	83,358	87,194	-4%	86,429	-4%
1,001	853	17%	816	23%	28	13,023	12,395	5%	11,957	9%
8,239	10,430	-21%	8,013	3%	29	103,834	110,912	-6%	#####	-4%

DECEMBER					YEAR TO DATE						
ACTUAL	BUDGET	% VAR.	LAST YEAR	% VAR.		ACTUAL	BUDGET	% VAR.	LAST YEAR	% VAR.	
<u>PAYER MIX (based on Gross Charges)-HOSPITAL ONLY</u>											
42.0%	43.5%		42.0%		30	MEDICARE (inc. Medicare Managed Care)	42.0%	43.3%	43.1%		
14.2%	14.6%		13.4%		31	MEDICAID (inc. Medicaid Managed Care)	15.3%	14.6%	13.7%		
34.7%	31.6%		36.0%		32	MANAGED CARE COMMERCIAL CONTRACTS	34.0%	31.8%	34.3%		
1.7%	1.7%		1.5%		33	PRIVATE INSURANCE	1.6%	1.7%	1.7%		
0.9%	1.2%		0.8%		34	LABOR AND INDUSTRY (Ind Med/Workers' Comp)	1.4%	1.2%	1.2%		
6.4%	7.3%		6.3%		35	SELF PAY / UN-INSURED	5.8%	7.4%	6.0%		
100.0%	100.0%		100.0%		36	TOTAL	100.0%	100.0%	100.0%		
<u>LABOR INDICATORS</u>											
1137	1021	11%	1047	9%	37	TOTAL FTES (Consolidated District)	1085	1016	7%	1033	5%
38 FTEs (Hospital Only)											
851	768	11%	757	12%	39	PRODUCTIVE FTE's	821	764	8%	778	6%
153	126	22%	165	-7%	40	NON PRODUCTIVE FTEs	132	125	6%	131	1%
1004	893	12%	923	9%	41	TOTAL FTEs	953	888	7%	909	5%
5.35	5.15	4%	5.32	1%	42	TOTAL FTE/ADJ. OCCUPIED BED	5.38	5.18	4%	5.29	2%
4.1%	2.3%	79%	3.3%	25%	43	AGENCY FTE AS % OF PRODUCTIVE FTE	3.4%	2.3%	51%	2.8%	24%
8.1%	5.9%	36%	8.6%	-6%	44	OVERTIME FTE AS % OF PRODUCTIVE FTE	6.7%	5.9%	14%	6.5%	3%
62.6%	60.7%	3%	59.8%	5%	45	TOTAL LABOR COST AS % OF TOTAL OPER EXP	61.2%	59.9%	2%	57.9%	6%
<u>REVENUE INDICATORS (HOSPITAL ONLY)</u>											
\$12,272	\$9,471	30%	\$9,864	24%	46	NET REVENUE PER ADJUSTED ADMIT (a)	\$10,173	\$9,082	12%	\$8,755	16%
51%	47%	8%	47%	8%	47	OUTPT REVENUE % (of Gross Chg) - TOTAL DISTRICT	50%	48%	4%	48%	4%
57.4%	60.5%	-5%	58.9%	-2%	48	CONTRACTUALS AS % OF GROSS CHARGES	59.2%	60.2%	-2%	56.8%	4%
2.7%	2.4%	14%	2.2%	22%	49	CHARITY AS % OF GROSS CHARGES	2.1%	2.4%	-11%	2.0%	7%
2.5%	4.8%	-49%	2.6%	-3%	50	BAD DEBTS AS % OF GROSS CHARGES	4.8%	4.8%	-2%	4.0%	19%
37.4%	32.2%	16%	36.3%	3%	51	NET REVENUE AS A % OF GROSS CHARGES	33.9%	32.5%	4%	37.2%	-9%
<u>OPERATING EXPENSE INDICATORS (HOSPITAL ONLY)</u>											
\$9,412	\$9,324	1%	\$8,999	5%	52	TOTAL EXPENSE PER ADJUSTED ADMIT	\$9,153	\$8,988	2%	\$8,646	6%
14.2%	14.9%	-5%	14.1%	1%	53	SUPPLY EXPENSE AS % OF NET PATIENT REVENUE	13.9%	15.2%	-8%	15.2%	-9%
<u>BALANCE SHEET INDICATORS</u>											
48.8	38.0		40.6		54	DAYS OF CASH ON HAND	48.8	38.0		40.6	
50.0	51.5		49.5		55	GROSS DAYS IN AR (HOSPITAL ONLY), credit bal. netted	50.0	51.5		49.5	
12.4	13.5		14.3		56	AVERAGE AGE OF PLANT	12.4	13.5		14.3	
32.1	45.0		48.0		57	LONG TERM DEBT TO EQUITY	32.1	45.0		48.0	

(a) excludes out-of-period contractual adjustments

STEVENS HOSPITAL
STATEMENT OF OPERATIONS
 DECEMBER, 2009
 (In thousands)

DECEMBER					YEAR TO DATE						
ACTUAL	BUDGET	FAV (UNFAV) VAR	% VAR.	LAST YEAR		ACTUAL	BUDGET	FAV (UNFAV) VAR	% VAR.	LAST YEAR	
\$20,311	\$18,876	\$1,435	7.6%	\$17,512	1	OPERATING REVENUE					
20,851	16,726	4,125	24.7%	15,534	2	INPATIENT REVENUE	\$223,805	\$213,275	\$10,530	4.9%	\$185,724
41,162	35,602	5,560	15.6%	33,047	3	OUTPATIENT REVENUE	219,900	195,552	24,348	12.5%	169,116
						TOTAL PATIENT REVENUE	443,705	408,827	34,878	8.5%	354,840
						DEDUCTIONS					
22,677	20,550	(2,126)	-10.3%	18,434	4	CONTRACTUAL ALLOWANCES	251,917	234,822	(17,095)	-7.3%	191,264
1,064	805	(259)	-32.2%	694	6	CHARITY	8,968	9,237	269	2.9%	6,635
1,003	1,636	633	38.7%	806	5	BAD DEBTS	20,445	18,781	(1,664)	-8.9%	13,467
24,744	22,991	(1,752)	-7.6%	19,934	7	TOTAL	281,330	262,841	(18,490)	-7.0%	211,367
16,418	12,610	3,808	30.2%	13,112	8	NET PATIENT REVENUE	162,374	145,987	16,388	11.2%	143,473
531	773	(242)	-31.3%	549	9	OTHER OPERATING INCOME	8,623	9,274	(651)	-7.0%	8,467
16,949	13,383	3,566	26.6%	13,661	10	TOTAL OPERATING REVENUE	170,998	155,260	15,737	10.1%	151,940
						OPERATING EXPENSES					
7,170	6,243	(927)	-14.8%	5,934	11	SALARIES & WAGES	76,206	72,081	(4,125)	-5.7%	69,039
1,577	1,492	(86)	-5.7%	1,344	12	EMPLOYEE BENEFITS	18,149	17,223	(926)	-5.4%	15,370
2,994	2,622	(372)	-14.2%	2,217	13	SUPPLIES	30,478	30,464	(14)	0.0%	29,345
1,117	1,395	278	19.9%	1,719	14	PURCHASED SERVICES & PROF FEES	17,475	16,623	(852)	-5.1%	19,501
718	856	138	16.1%	480	15	INSURANCE, UTILITIES, REPAIRS & RENT	9,368	10,276	908	8.8%	9,996
750	541	(209)	-38.5%	563	16	DEPRECIATION	6,325	6,496	171	2.6%	5,695
187	116	(72)	-62.2%	295	17	OTHER	1,454	1,387	(68)	-4.9%	1,664
14,514	13,264	(1,249)	-9.4%	12,553	18	TOTAL OPERATING EXPENSE	159,456	154,551	(4,905)	-3.2%	150,610
2,436	119	2,317	1953.6%	1,109	19	OPERATING INCOME (LOSS)	11,542	710	10,832	1525.9%	1,330
						NON-OPERATING INCOME & (EXPENSE)					
163	163	0	0.1%	144	20	MAINTENANCE & OPERATIONS TAX LEVY	1,964	1,956	8	0.4%	1,913
50	63	(13)	-19.9%	80	21	INVESTMENT INCOME-UNRESTRICTED	910	755	155	20.5%	795
(193)	-	(193)	0.0%	182	22	UNREALIZED INVESTMENT GAINS (LOSSES)	(213)	-	(213)	0.0%	418
(79)	(148)	69	-46.9%	(147)	23	INTEREST EXPENSE	(1,222)	(1,777)	555	-31.2%	(1,697)
54	34	19	56.0%	31	24	OTHER (NON CAP GRANTS, AMORT EXP, OTHER)	438	412	26	6.3%	424
(4)	112	(116)	-103.9%	289	25	TOTAL NON-OPERATING INCOME & EXPENSE	1,876	1,346	530	39.4%	1,854
175	162	13	8.3%	158	26	GENERAL OBLIGATION BOND ACTIVITY, NET	2,018	1,944	74	3.8%	1,818
\$2,607	\$393	\$2,214	563.6%	\$1,556	27	NET INCOME (LOSS)	\$15,436	\$4,000	\$11,436	285.9%	\$5,002
						USE OF NET INCOME:					
3,229				3,312	28	PRINCIPAL PAYMENTS ON DEBT	5,315			4,995	
546				517	29	CAPITAL EXPENDITURES	9,544			3,978	
\$(1,168)				\$(2,272)	30	NET AFTER PRINCIPAL PMTS AND CAP EX	\$577			\$(3,971)	
						FINANCIAL RATIOS					
60.1%	64.6%			60.3%	31	DEDUCTIONS AS % OF REVENUE	63.4%	64.3%		59.6%	
14.4%	0.9%			8.1%	32	OPERATING INCOME MARGIN %	6.7%	0.5%		0.9%	
15.4%	2.9%			11.4%	33	NET INCOME MARGIN %	9.0%	2.6%		3.3%	
19.3%	6.9%			15.6%	34	EBITDA MARGIN %	12.3%	6.7%		7.0%	



STEVENS HOSPITAL
BALANCE SHEET
 DECEMBER, 2009
(In thousands)

ASSETS	DECEMBER 2009	DECEMBER 2008	LIABILITIES AND NET ASSETS	DECEMBER 2009	DECEMBER 2008
1 CURRENT ASSETS			CURRENT LIABILITIES		
2 Cash and cash equivalents	\$2,000	\$2,266	36 Current maturities LTD funded from operations	\$2,776	\$11,354
3 Short term investments	18,616	13,989	37 Current maturity of GO Bond funded from tax levies	1,855	1,855
4 Accounts Receivable-gross	65,787	52,835	38 Notes payable	953	1,085
5 Contractual allowances	(31,181)	(26,094)	39 Warrants payable	1,700	915
6 Allowance for doubtful accounts	(13,948)	(8,820)	40 Accounts payable	9,425	9,880
7 Other receivables	2,067	2,011	41 Accrued liabilities:		
8 Supply inventories	2,275	2,342	42 Payroll	1,284	3,315
9 Prepaid expenses and other	2,116	1,901	43 Vacation	3,171	2,811
10 Estimated third party receivable	650	621	44 Health benefits & workers comp	1,442	1,238
11 Current Portion of restricted assets	(0)	7,467	45 Other payroll related	1,647	1,085
12 Total current assets	<u>48,382</u>	<u>48,517</u>	46 Interest	50	102
			47 Reserve for professional liability	308	174
RESTRICTED ASSETS			48 Estimated third party liability	300	300
13 Under bond indenture (1995 Bond) - Sinking Fund	(0)	7,467	49 Total current liabilities	<u>24,912</u>	<u>34,115</u>
14 Under bond indenture (1995 Bond) - Max Debt Service	1,300	1,300			
15 Sinking fund for cur. yr 1999 UTGO Bond payment	-	-	LONG TERM DEBT		
16 Bank of America computer project fund	-	2,305	50 Note Payable to Bank of America	3,595	4,740
17 Temporary investment of tax revenue	212	49	51 Capitalized lease obligations	449	1,562
18 Taxes and interest receivable	143	194	52 1995 Revenue Bonds	5,600	14,000
19 Temporarily restricted assets of Foundation	55	122	53 1999 LT GO Bonds	10,000	10,900
20 Less: current portion of restricted assets	0	(7,467)	54 2005 LT GO Bonds	209	603
21 Total investments	<u>1,710</u>	<u>3,971</u>	55 Less: current portion	(2,776)	(11,354)
			56 Total long term debt funded from operations	<u>17,078</u>	<u>20,450</u>
PROPERTY, PLANT AND EQUIPMENT			57 2003 UT GO Refunding Bonds	3,105	4,960
22 Land	3,996	3,996	58 Unamortized premium for 2003 issue	73	161
23 Land Improvements	2,285	2,228	59 Less: current portion	(1,855)	(1,855)
24 Buildings	37,965	37,609	60 Total long Term Debt funded from tax levies	<u>1,323</u>	<u>3,266</u>
25 Fixed equipment	25,827	27,689			
26 Equipment	47,529	45,938	OTHER LONG TERM LIABILITIES		
27 Accumulated depreciation	(78,474)	(81,351)	61 Deferred liability	6,147	6,281
28 Net in use capital assets	39,129	36,109	62 Asbestos future liability (FASB 47 obligation)	1,000	1,045
29 Construction in progress	678	479			
30 Net property, plant and equipment	<u>39,807</u>	<u>36,588</u>	NET ASSETS (Fund Balances)		
			63 Unrestricted fund (general fund)	42,074	26,316
OTHER ASSETS			64 Temporarily restricted funds (Foundation)	54	122
31 Joint venture Investments	1,171	1,052	65 Total net assets	<u>42,128</u>	<u>26,438</u>
32 Employee contributions funded	1,308	1,212			
33 Deferred financing costs	210	256	66 Total liabilities and net assets	<u>\$92,588</u>	<u>\$91,596</u>
34 Total other assets	<u>2,689</u>	<u>2,520</u>			
35 Total Assets	<u>\$92,588</u>	<u>\$91,596</u>			

(0)

**FINANCIAL INDICATORS
STAND - ALONE HOSPITALS
DECEMBER, 2009**

No	Financial Ratio	S&P Median Values		Stevens Hospital							
		A	BBB	2002	2003	2004	2005	2006	2007	2008	2009 YTD
Balance Sheet											
1	Days cash on hand	212.0	121.9	50.3	28.6	34.7	29.7	37.4	29.7	40.6	48.8
2	Net days revenue in A/R	51.5	51.0	50.1	56.7	44.9	42.1	55.9	52.2	43.7	42.6
3	Cushion ratio (a) (b)	17.2	8.4	7.5	3.5	3.6	2.9	3.9	2.1	4.2	5.2
4	Long term debt to capitalization (a)	34.1	42.7	56.7	56.7	58.0	59.6	55.1	56.9	48.0	32.1
5	Long term debt to equity (a)	0.5	0.7	1.3	1.3	1.4	1.5	1.2	1.3	0.9	0.5
6	Average age of plant (d)	9.5	9.6	10.8	11.1	10.8	12.4	13.4	12.9	14.3	12.4
Income Statement											
7	Operating margin	3.0%	2.0%	-1.2%	-4.5%	-3.0%	-2.9%	-1.3%	-1.1%	0.9%	6.7%
8	Income Margin before LT GO Bond activity	5.1%	3.0%	-0.1%	-3.2%	-3.3%	-2.0%	-0.1%	0.5%	1.2%	7.8%
9	Final Net Income Margin	6.3%	4.2%	0.9%	-2.0%	-1.1%	-0.7%	1.2%	1.8%	3.3%	9.0%
10	EBIDA margin	13.8%	10.8%	6.0%	3.2%	3.9%	3.4%	5.3%	5.8%	7.0%	12.3%
11	Debt service coverage	4.7	3.1	3.4	1.2	0.9	1.1	1.8	1.4	1.9	5.3

(a) excludes the effect of UT GO Bonds and net of 1995 Revenue Bond Sinking Fund

(b) cushion ratio = unrestricted cash / annual debt service

(d) average age of plant = accumulated depreciation / annual depreciation expense

STEVENS HOSPITAL
STATEMENT OF CASH FLOW
DECEMBER, 2009
(In thousands)

Line #		<u>DECEMBER 2009</u>	<u>YEAR-TO-DATE 2009</u>
1	Operating income (loss)	\$2,436	\$11,542
2	Non-operating revenues, net	(4)	1,876
3	Add: depreciation	750	6,325
4	Add: amortization of deferred financing costs	4	46
5	Total Cash provided from Operating and Non-operating Activities	<u>3,185</u>	<u>19,789</u>
6	(Increase) Decrease in net patient accounts receivable	(1,011)	(2,736)
7	(Increase) Decrease in supply inventories, prepaid and other current assets	(0)	68
8	(Increase) Decrease in prepaid and other current assets	287	(272)
9	(Increase) Decrease in third party settlements receivable	99	(29)
10	(Increase) Decrease in current portion of restricted assets	522	7,467
11	Increase (Decrease) in note payable	(117)	(132)
12	Increase (Decrease) in warrants payable	(223)	784
13	Increase (Decrease) in accounts payable	300	(455)
14	Increase (Decrease) in payroll related liabilities	(1,492)	(904)
15	Increase (Decrease) in professional liability reserve	155	134
16	Increase (Decrease) in third party settlements payable	(420)	-
17	(Increase) Decrease in other non current assets	(21)	(215)
18	Increase (Decrease) in other non current liabilities	(320)	(180)
19	Total Cash provided (used) for Operating Activities	<u>(2,242)</u>	<u>3,530</u>
20	Net Additions to property, plant and equipment	(546)	(9,544)
21	Total Cash provided (used) by Investing Activities	<u>(546)</u>	<u>(9,544)</u>
22	Addition of new debt	-	-
23	Addition of new capital lease obligations	-	-
24	Use of restricted donations to fund capital expenditures	96	125
25	Increase (Decrease) in interest payable	(274)	(53)
26	(Increase) Decrease in restricted assets	2,601	2,261
27	Increase (Decrease) in current portion of long-term debt	(282)	(8,579)
28	Increase (Decrease) in long-term debt due to principal payments	(3,229)	(5,315)
29	Increase (Decrease) in net income from GO debt/tax levy activities	175	2,018
30	Increase (Decrease) in net activity of temp. restricted fund bal. (foundation)	(105)	(68)
31	Increase (Decrease) in unrestricted fund balance	91	197
32	Total Cash provided (used) by Financing Activities	<u>(926)</u>	<u>(9,413)</u>
33	Net Increase (Decrease) in Cash Balance	<u>(529)</u>	<u>4,362</u>
34	Cash balance at beginning of the period	21,146	16,255
35	Cash balance at the end of the period	<u><u>\$20,617</u></u>	<u><u>\$20,617</u></u>
		(1)	0
	Days of cash on hand		
36	Begining of Period	50.6	40.6
37	End of Period	48.8	48.8
38	Increase (decrease) during period	(1.8)	8.2

**STEVENS HOSPITAL
INVESTMENT SCHEDULE
DECEMBER, 2009**

PORTFOLIO COMPOSITION

INVESTMENT	DECEMBER 2009	% OF TOTAL	PURCHASES	MATURITIES/ WITHDRAWAL	*ADJUSTMENT TO MARKET	DECEMBER 2009	% OF TOTAL	POLICY	YIELD
1 CASH	4,908,893	19%		(2,912,533)		1,996,360	9%	50%	0.35%
2 L.G.I.P.	3,127,835	12%		(469,237)		2,658,598	12%	50%	1.27%
3 STIF P&R	342,671	1%		72,775		415,446	2%	25%	0.71%
4 MONEY MARKET GOVT FUND US BK	0	0%				0	0%	100%	0.00%
5 MUTUAL FUND GNMA (COST) P&R	8,757,036	34%		36,753		8,793,789	40%	25%	4.50%
6 CERTIFICATE OF DEPOSIT	0	0%				0	0%	25%	
7 U.S. AGENCIES (COST) P&R	6,442,809	25%		(60,345)		6,382,464	29%	100%	5.64%
8 U.S. GOVERNMENT (COST) P&R	1,492,482	6%				1,492,482	7%	100%	0.00%
9 MARKET VALUE ADJUSTMENT P&R	430,792	2%			(192,776)	238,016	1%		
TOTAL	25,502,518	100%	-	(3,332,587)	(192,776)	21,977,155	100%		

MATURITY SCHEDULE

INVESTMENT	0 - 1 MONTH	1 - 6 MONTHS	6 - 12 MONTHS	1 - 3 YEARS	3 - 5 YEARS	5 - 10 YEARS	TOTAL
10 CASH	1,996,361	0	0	0	0	0	1,996,361
11 L.G.I.P.	2,658,598	0	0	0	0	0	2,658,598
12 STIF P&R	415,446	0	0	0	0	0	415,446
13 MONEY MARKET GOVT FUND US BK	0	0	0	0	0	0	0
14 MUTUAL FUND GNMA (COST) P&R	8,793,789	0	0	0	0	0	8,793,789
15 CERTIFICATE OF DEPOSIT	0	0	0	0	0	0	0
16 U.S. AGENCIES (COST) P&R	0	0	1,298,932	1,077,216	1,347,966	2,658,350	6,382,464
17 U.S. GOVERNMENT (COST) P&R	0	1,492,482	0	0	0	0	1,492,482
18 MARKET VALUE ADJUSTMENT P&R	238,016						238,016
TOTAL	13,864,194	1,492,482	1,298,932	1,077,216	1,347,966	2,658,350	21,977,156
%	63%	7%	6%	5%	6%	12%	100%
CUMULATIVE %	63%	70%	76%	81%	87%	99%	
POLICY CUMULATIVE MIN. %			20.0%	20.0%	80.0%	100.0%	

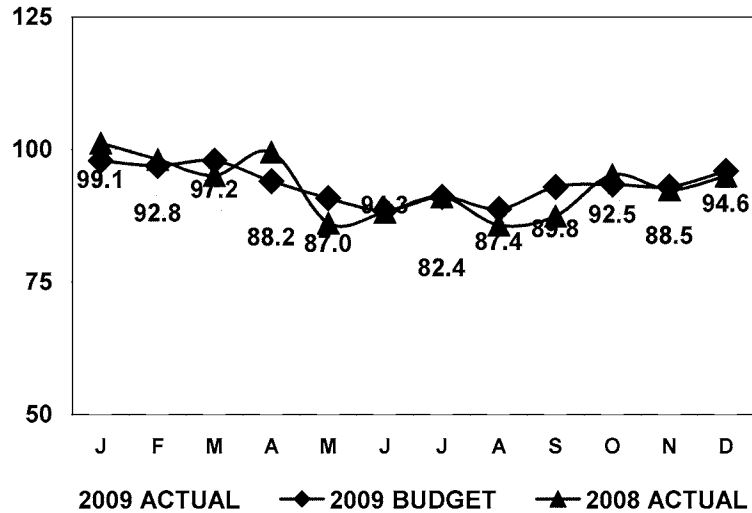
RECONCILIATION

1000 1005 CASH OPERATING FUND	89,387
1000 1006 CASH OPERATING SWEEP	1,872,498
1000 1015 IMPREST FUND - PETTY CASH	4,068
1000 1016 FIRST CHOICE CHECKING	9,173
1000 1020 SEDGWICK CHECKING	21,235
	<hr/>
	1,996,361
1000 1025 CURRENT OPERATING INVEST	18,468,635
	<hr/>
1000 1705 1995 REV BOND - RESERVE	1,300,000
1000 1706 1995 SINKING FUND	(10)
1000 1710 1999 LTGO BOND RESERVE	-
1000 1712 CSA ACQUISITION FUND (BoA)	-
1000 1715 TAX LEVY CASH AND CASH EQUIV	212,170
RESTRICTED INVESTMENTS	1,512,160
Rounding	(1)
TOTAL CASH, CASH EQUIV & INVESTMENTS	21,977,155

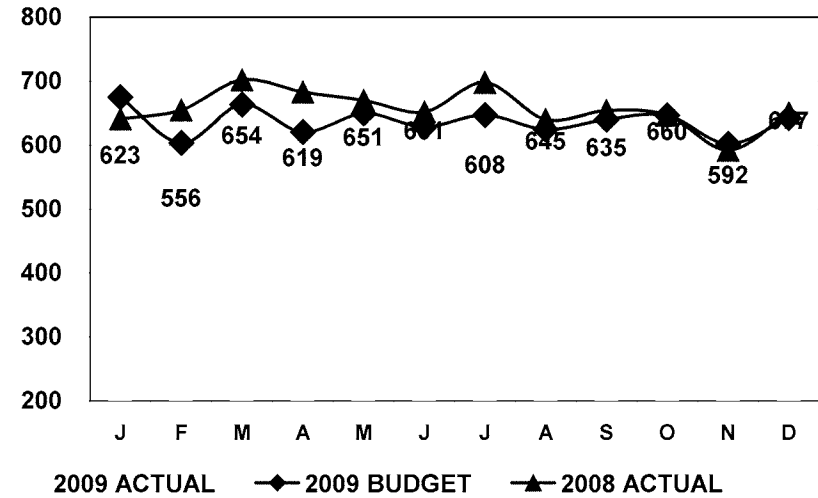
* Adjustment to market as required to comply with GASB 31

STEVENS HOSPITAL GRAPHS OF KEY OPERATING INDICATORS DECEMBER, 2009

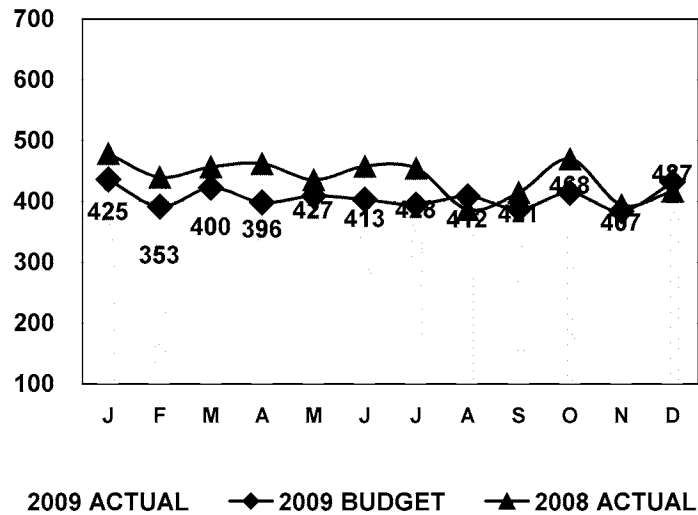
TOTAL CENSUS (Acute+Psych+NICU)



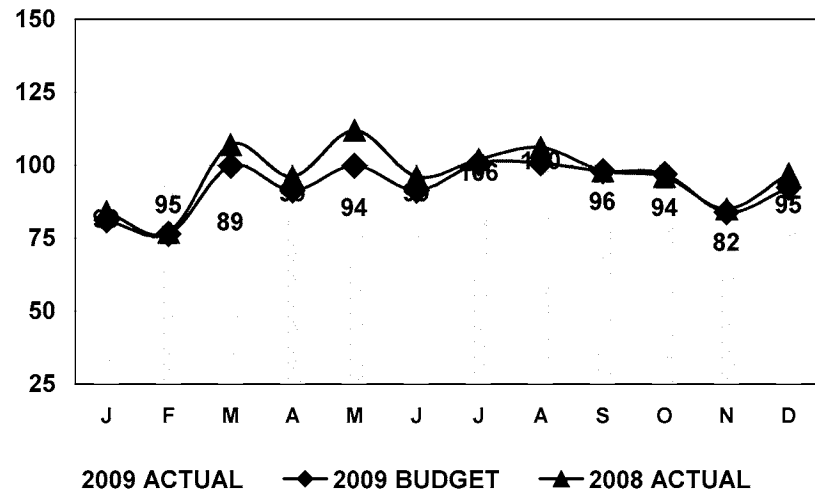
TOTAL ADMITS



TOTAL SURGERIES

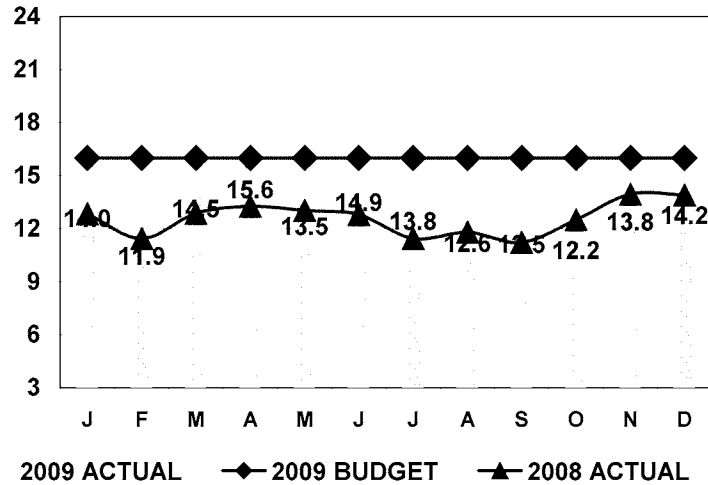


DELIVERIES

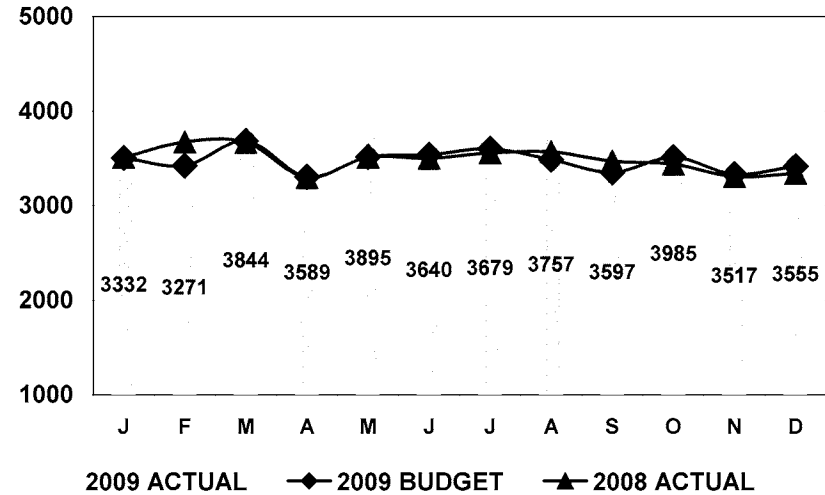


STEVENS HOSPITAL GRAPHS OF KEY OPERATING INDICATORS DECEMBER, 2009

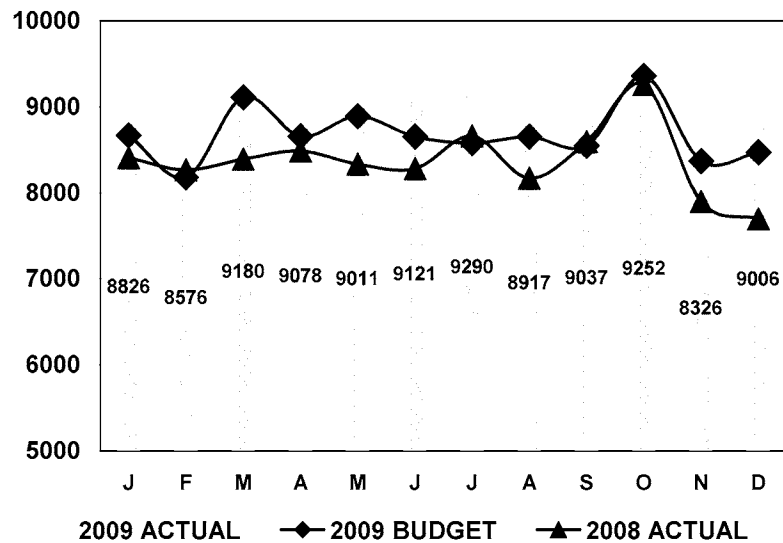
PSYCH ADC



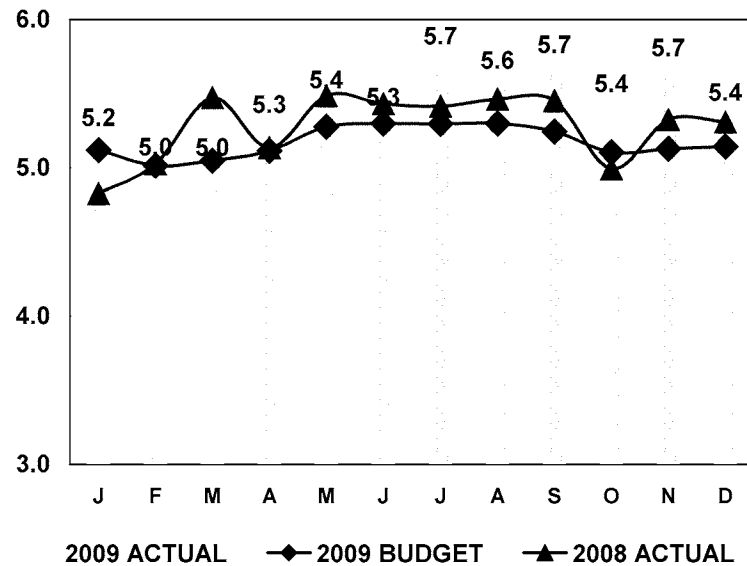
TOTAL ER VISITS



TOTAL OUTPATIENT VISITS

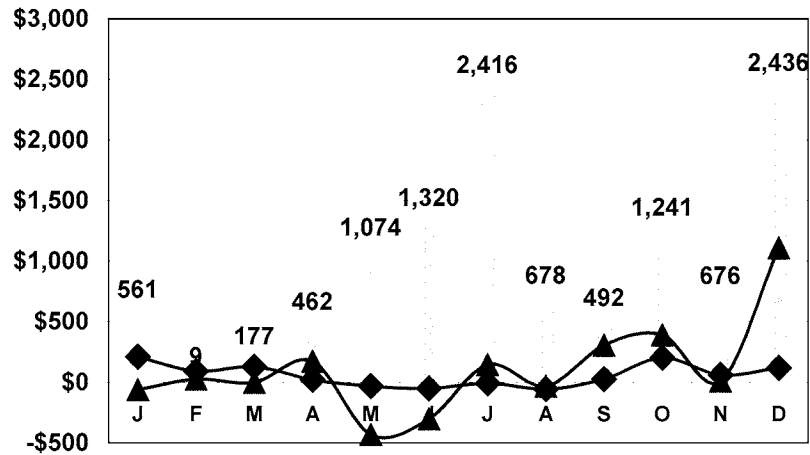


FTE per Adjusted Occupied Bed (HOSPITAL ONLY)



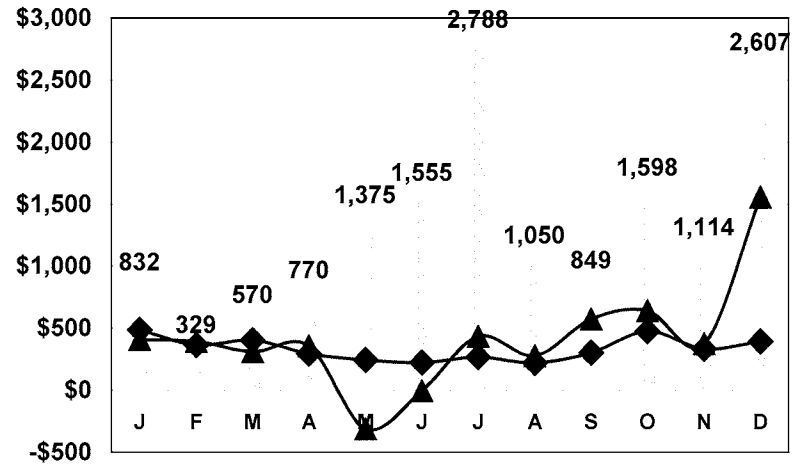
STEVENS HOSPITAL GRAPHS OF KEY OPERATING INDICATORS DECEMBER, 2009

Operating Income (in thousands)



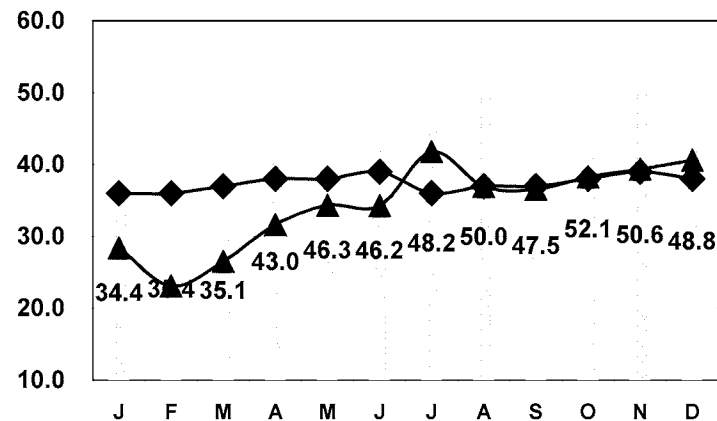
2009 ACTUAL ◆ 2009 BUDGET ▲ 2008 ACTUAL

Net Income (in thousands)



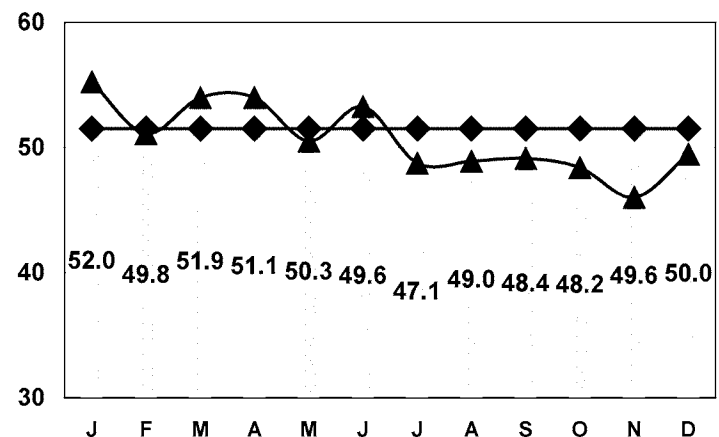
2009 ACTUAL ◆ 2009 BUDGET ▲ 2008 ACTUAL

Days of Operating Cash Available



2009 ACTUAL ◆ BUDGET 2009 ▲ 2008 ACTUAL

Gross Accounts Receivable Days Outstanding



2009 ACTUAL ◆ 2009 BUDGET ▲ 2008 ACTUAL

STEVENS HOSPITAL GRAPHS OF KEY OPERATING INDICATORS DECEMBER, 2009

ER Admits as a % of Total ER Visits

